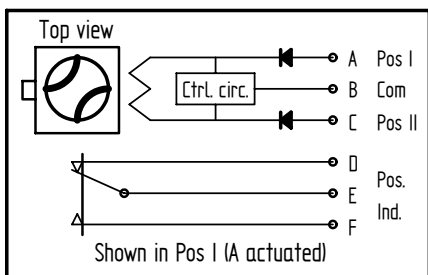
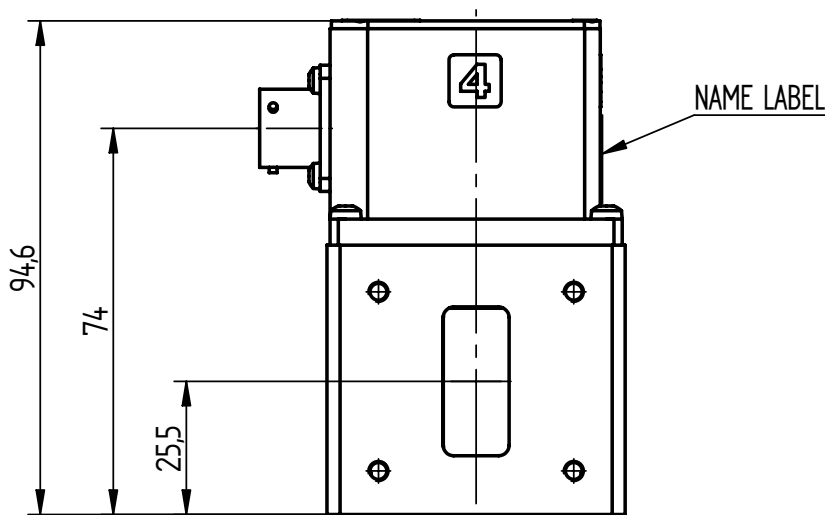
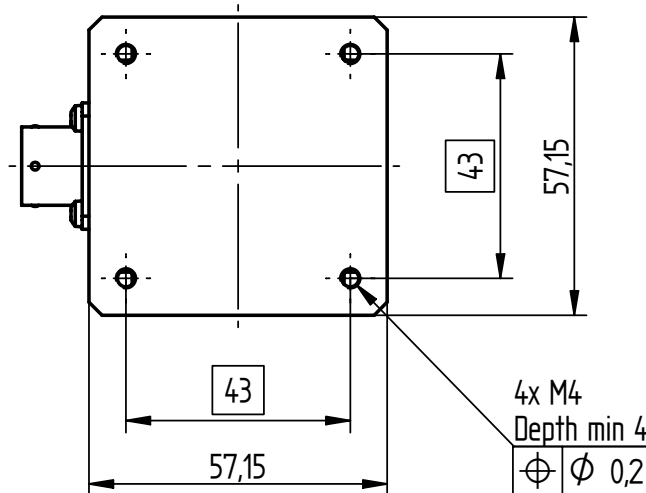
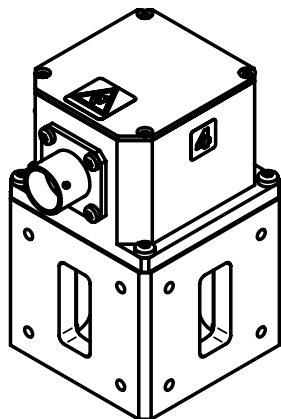


CAD-dokument
 För ej revideras manuellt

This document is our property and shall not without our written permission be altered, copied or communicated to a third party.

© SIVERS LAB AB

Issue	Modification			Date	Sign.	Chkd.
B	ECO			2003-1016	HNq	HW



CAUTION!
ESD SENSITIVE

Drawing principle	SS 1902	UNLESS OTHERWISE STATED THE FOLLOWING APPLIES: General tolerances, linear and angular dimensions: ISO 2768-c	Ref.	030108	Sign.	CEL
Tolerancing principle	ISO 8015		Chkd.		Sign.	HW
Dimensions in mm		·∠·⊕· Europ. proj.	Appvd.		Sign.	HW
SIVERS	Title WAVEGUIDE SWITCH WR112/R84/WG15 Latching		Designed		Sheet	1 (2)
			Scale	1:15	Issue	B
			Doc. no.	WS8086H/00		

Reference	Approved	Origin date	Issue date	Issue	Page	Document
HNg	HW	2003-01-08	2003-11-03	B	2 (2)	WS 8086H/00

RF DATA

Frequency range	7.05 – 10.0 GHz
VSWR	1.10
Insertion loss	0.1 dB
Isolation	80 dB
Peak power	350 kW at 0.1 MPa abs., +25°C
Average power	4 kW
Flange interface	MIL-DTL-3922/53D-004 Modified with M4, thread depth min 5

ACTUATOR DATA

Operating voltage	28±3 V DC
Operating current	1 A, Self cut off
Switching time	300 ms
Duty (min time between successive operations)	500 ms -40°C to +40°C linearly increasing to 2 s at +85°C
Connector	MS 3112E 10-6P
Mating connector	MS 3116F 10-6S or eq.

POSITION INDICATOR

Voltage / Current	30 V Max, 100 mA Max Resistive load
-------------------	-------------------------------------

MECHANICAL DATA

Material	Aluminium alloy, Cu free
Finishing	Chromate per MIL-C-5541 and black painted
Air pressure	0.1 MPa overpr. Max
Air leakage	10 cm ³ /min (0.1 MPa overpr.) Max
Weight	0.5 kg Max
Life	250 000 actuations

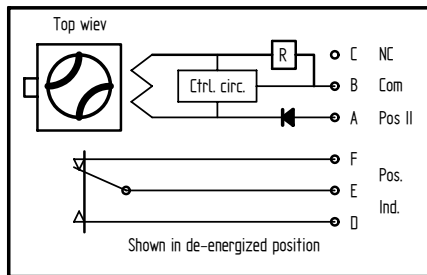
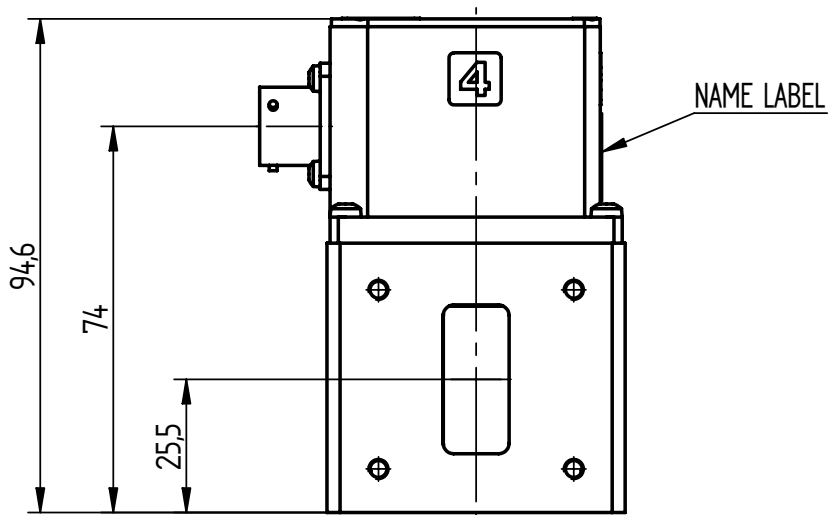
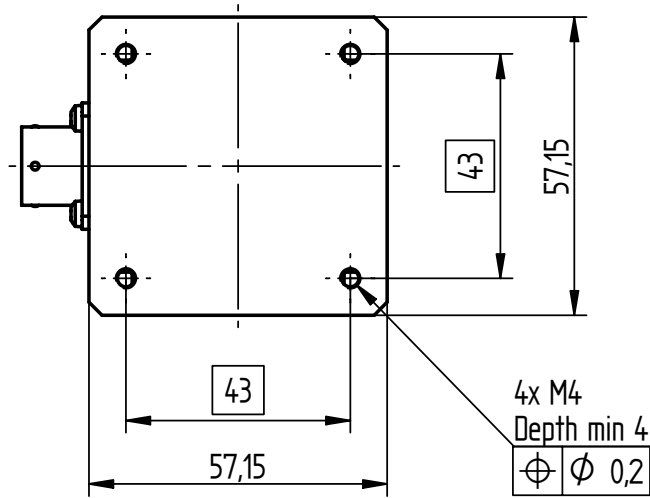
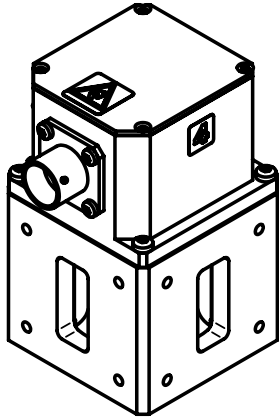
ENVIRONMENTAL DATA

Ambient temperature	-40°C to +85°C
Vibration	5 – 18 Hz, 3 mm amplitude 18 – 2000 Hz, 15 g
Humidity	100%RH if dry air in waveguide

CAD-dokument
Får ej revideras manuellt

This document is our property and shall not without our written permission be altered, copied or communicated to a third party.

Issue	Modification	Date	Sign.	Chkd.



CAUTION!
ESD SENSITIVE

Drawing principle	SS 1902	UNLESS OTHERWISE STATED THE FOLLOWING APPLIES: General tolerances, linear and angular dimensions: ISO 2768-c ·⊕· ⊕ Europ. proj.	Ref. 2003-1112	Sign. HNg
Tolerancing principle	ISO 8015		Chkd.	Sign. HW
Dimensions in mm			Appvd.	Sign. HW
	Title WAVEGUIDE SWITCH WR112/R84/WG15 Fail-safe		Designed	Sheet 1 (2)
			Scale 1:1,5	Issue A
			Doc. no. WS8087H/00	

Reference HNg	Approved HW	Origin date 2003-11-12	Issue date 2003-11-12	Issue A	Page 2 (2)	Document WS 8087H/00
------------------	----------------	---------------------------	--------------------------	------------	---------------	--------------------------------

RF DATA

Frequency range	7.05 – 10.0 GHz
VSWR	1.10
Insertion loss	0.1 dB
Isolation	80 dB
Peak power	350 kW at 0.1 MPa abs., +25°C
Average power	4 kW
Flange interface	MIL-DTL-3922/53D-004 Modified with M4, thread depth min 5

ACTUATOR DATA

Operating voltage	28±3 V DC
Operating current	1 A, Auto switch on to holding current after 200 ms
Holding current	300 mA
Switching time	300 ms
Duty (min time between successive operations)	500 ms -40°C to +40°C linearly increasing to 2 s at +85°C
Connector	MS 3112E 10-6P
Mating connector	MS 3116F 10-6S or eq.

POSITION INDICATOR

Voltage / Current	30 V Max, 100 mA Max Resistive load
-------------------	-------------------------------------

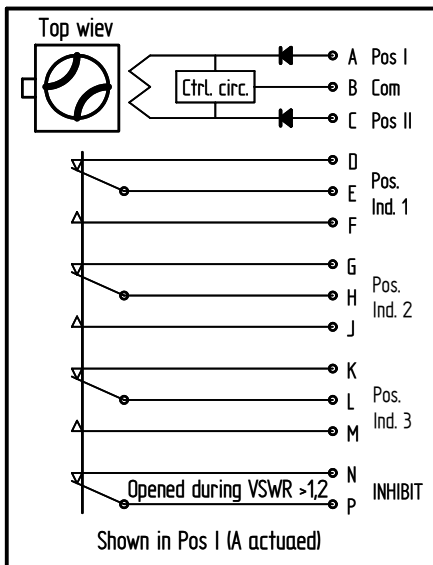
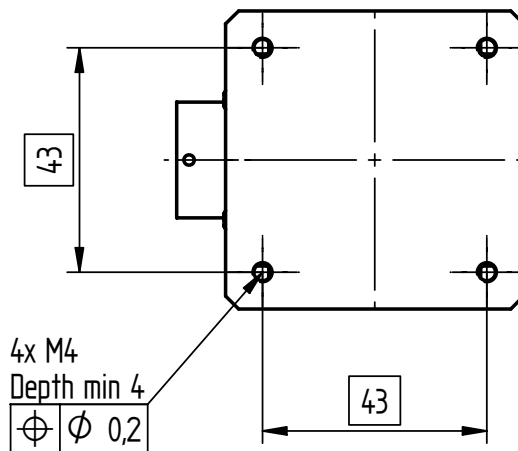
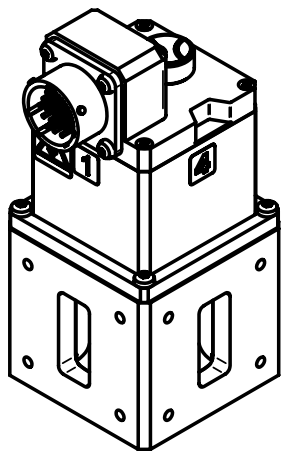
MECHANICAL DATA

Material	Aluminium alloy, Cu free
Finishing	Chromate per MIL-C-5541 and black painted
Air pressure	0.1 MPa overpr. Max
Air leakage	10 cm ³ /min (0.1 MPa overpr.) Max
Weight	0,5 kg Max
Life	250 000 actuations

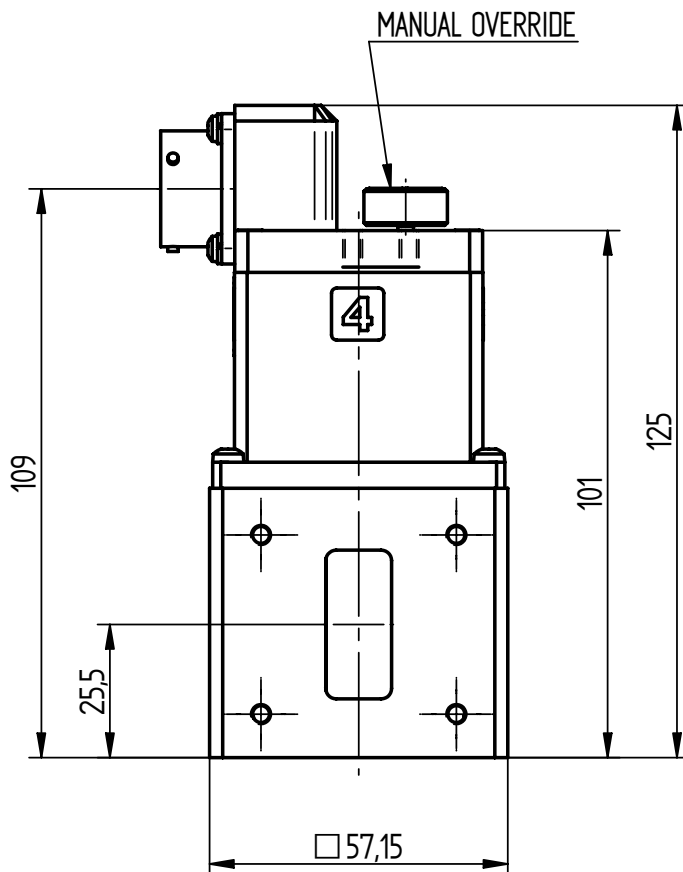
ENVIRONMENTAL DATA

Ambient temperature	-40°C to +85°C
Vibration	5 – 18 Hz, 3 mm amplitude 18 – 2000 Hz, 15 g
Humidity	100%RH if dry air in waveguide

Issue	Modification			Date	Sign.	Chkd.
B	ECO			2003-1016	HNg	HW



CAUTION!
ESD SENSITIVE



Drawing principle	SS 1902	UNLESS OTHERWISE STATED THE FOLLOWING APPLIES: General tolerances, linear and angular dimensions: ISO 2768-c - Europ. proj.	Ref.	020430	Sign.	CEL
Tolerancing principle	ISO 8015		Chkd.		Sign.	HW
Dimensions in mm			Appvd.		Sign.	HW
	Title	WAVEGUIDE SWITCH WR112R84/WG15 Latching	Designed		Sheet	1 (2)
			Scale	1:15	Issue	B
			Doc. no.	WS8186H/00		

Reference	Approved	Origin date	Issue date	Issue	Page	Document
HNg	HW	2002-04-30	2003-11-05	B	2 (2)	WS 8186H/00

RF DATA

Frequency range	7.05 – 10.0 GHz
VSWR	1.10
Insertion loss	0.1 dB
Isolation	80 dB
Peak power	350 kW at 0.1 MPa abs., +25°C
Average power	4 kW
Flange interface	MIL-DTL-3922/53D-004 Modified with M4, thread depth min 5

ACTUATOR DATA

Operating voltage	28±3 V DC
Operating current	1 A, Self cut off
Switching time	250 ms
Duty (min time between successive operations)	500 ms -20°C to +40°C linearly increasing to 2 s at +70°C
Connector	MS 3112E 14-19P
Mating connector	MS 3116F 14-19S or eq.

POSITION INDICATOR

Voltage / Current	30 V Max, 100 mA Max Resistive load
Position indicator	Three sets of C-form contacts and one set of inhibit contact, opened during VSWR >1,2

MECHANICAL DATA

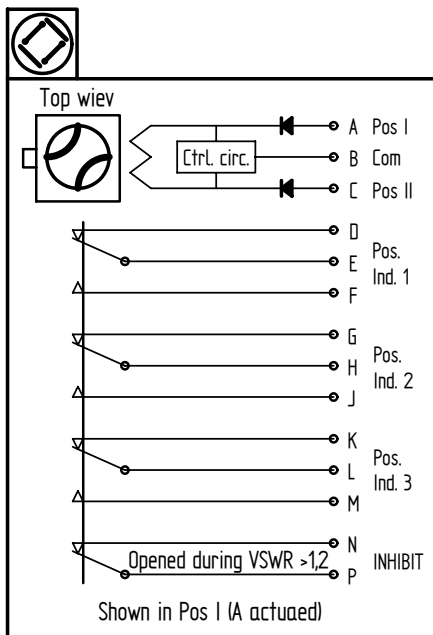
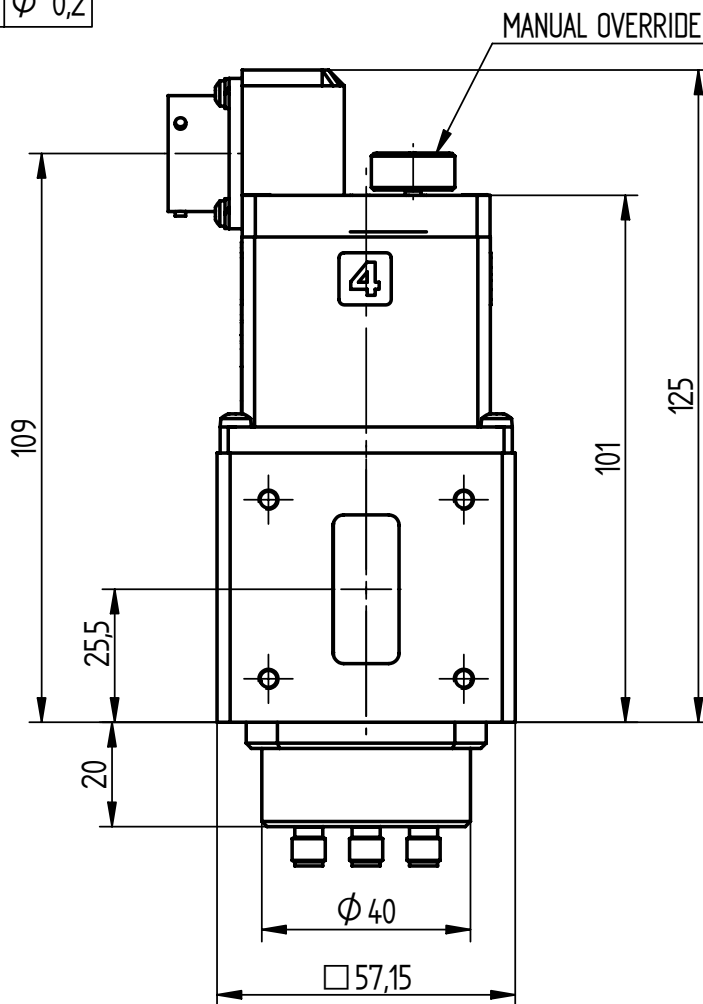
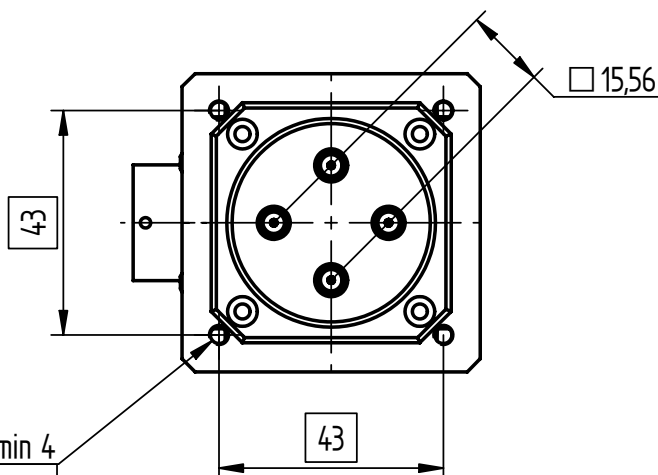
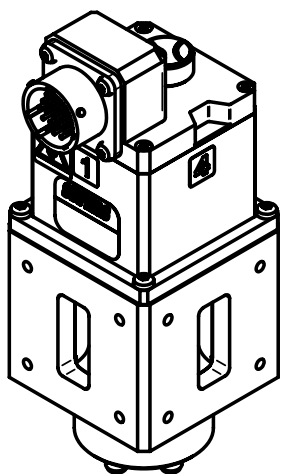
Material	Aluminium alloy, Cu free
Finishing	Chromate per MIL-C-5541 and black painted
Air pressure	0.1 MPa overpr. Max
Air leakage	10 cm ³ /min (0.1 MPa overpr.) Max
Weight	0.7 kg Max
Life	250 000 actuations

ENVIRONMENTAL DATA

Ambient temperature	-20°C to +70°C
Vibration	5 – 18 Hz, 3 mm amplitude 18 – 2000 Hz, 15 g
Humidity	100%RH if dry air in waveguide

CAD-dokument
 För ej revideras manuellt

Issue	Modification	Date	Sign.	Chkd.
B	ECO	2003-1016	HNg	HW



CAUTION!
ESD SENSITIVE

This document is our property and shall not without our written permission be altered, copied or communicated to a third party.

© SIVERS LAB AB

Drawing principle	SS 1902	UNLESS OTHERWISE STATED THE FOLLOWING APPLIES: General tolerances, linear and angular dimensions: ISO 2768-c Europ. proj.	Ref.	030917	Sign.	MTr
Tolerancing principle	ISO 8015		Chkd.		Sign.	HW
Dimensions in mm			Appvd.		Sign.	HW
	Title		Designed	Sheet 1 (2)		
	WAVEGUIDE SWITCH WR112/R84/WG15 Latching with COAX DPDT		Scale	1:1,5	Issue	B
			Doc. no.	WS8186H/70		

Reference HNg	Approved HW	Origin date 2003-09-17	Issue date 2003-11-05	Issue B	Page 2 (2)	Document WS 8186H/70
------------------	----------------	---------------------------	--------------------------	------------	---------------	-------------------------

RF DATA

Waveguide

Frequency range	7.05 – 10.0 GHz
VSWR	1.1
Insertion loss	0.1 dB
Isolation	75 dB
Peak power	350 kW at 0.1 MPa abs., +25°C
Average power	4 kW
Flange interface	MIL-DTL-3922/53D-004 Modified with 10 – 32 UNC-2B, thread depth min 8

Coax

Frequency range	7.05 – 10.0 GHz
VSWR	1.3
Insertion loss	0.5 dB
Isolation	60 dB
Peak power	5 kW
Average power	15 W max
Coax connector	SMA-female

Isolation, waveguide-coax	120 dB
---------------------------	--------

ACTUATOR DATA

Operating voltage	28±3 V DC
Operating current	1 A, Self cut off
Switching time	250 ms
Connector	MS 3112E 14-19P
Mating connector	MS 3116F 14-19S or eq.

POSITION INDICATOR

Voltage / Current	30 V Max, 100 mA Max Resistive load
Position indicator	Three sets of C-form contacts and one set of inhibit contact, opened during VSWR >1.2

MECHANICAL DATA

Material	Aluminium alloy; Cu-free
Finishing	Chromate per MIL-C-5541
Air pressure	0.1 MPa overpr. Max
Air leakage	10 cm ³ /min (0.1 MPa overpr.) Max
Weight	0.7 kg Max
Life	250 000 actuations

ENVIRONMENTAL DATA

Ambient temperature	-20°C to +70°C
Vibration	5 – 18 Hz, 3 mm amplitude 18 – 2000 Hz, 15 g
Humidity	100%RH if dry air in waveguide