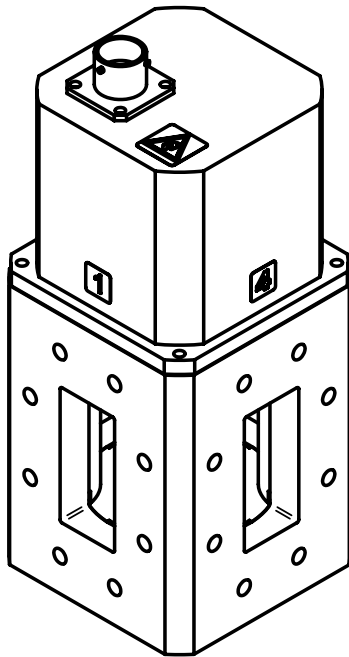
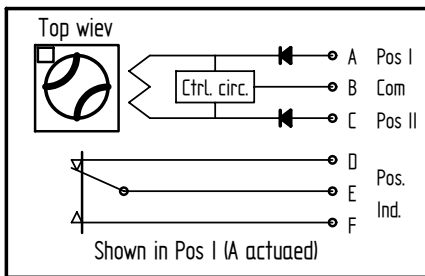
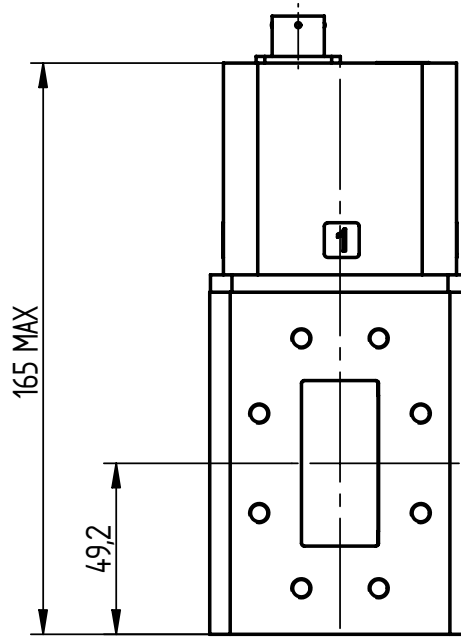
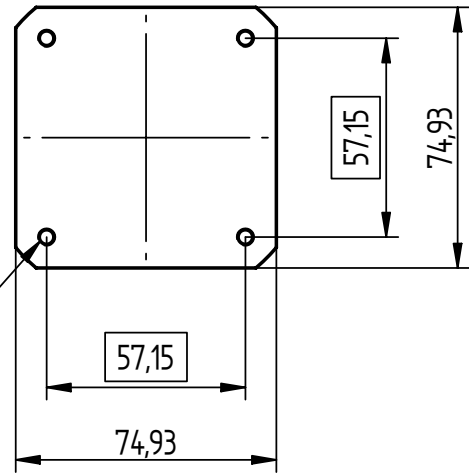


CAD-dokument
 För ej revideras manuellt

| | | | | | | | |
|-------|--------------|---|---|---|-----------|-------|-------|
| | 1 | 2 | 3 | 4 | 5 | | |
| Issue | Modification | | | | Date | Sign. | Chkd. |
| B | ECO | | | | 2003-1014 | HNg | HW |


 4x M5
 Depth min 8
 $\text{⌀} \text{ } \text{⌀} 0,2$


CAUTION!
ESD SENSITIVE

| | | | | | | |
|-----------------------|---|---|----------|------------|-------|-----|
| Drawing principle | SS 1902 | UNLESS OTHERWISE STATED THE FOLLOWING APPLIES: General tolerances, linear and angular dimensions: ISO 2768-c Europ. proj. | Ref. | 030630 | Sign. | SKm |
| Tolerancing principle | ISO 8015 | | Chkd. | | Sign. | HW |
| Dimensions in mm | | | Appvd. | | Sign. | HW |
| | Title | | Designed | Sheet 1(1) | | |
| | WAVEGUIDE SWITCH WR187/R48/WG12 Latching | | Scale | 1:1,5 | Issue | B |
| | | | Doc. no. | WS8286G/00 | | |

| | | | | | | |
|-----------|----------|-------------|------------|-------|-------|--------------------|
| Reference | Approved | Origin date | Issue date | Issue | Page | Document |
| HNg | HW | 2003-06-30 | 2003-11-04 | B | 2 (2) | WS 8286G/00 |

RF DATA

| | |
|------------------|--|
| Frequency range | 3.95 – 5.85 GHz |
| VSWR | 1.05 |
| Insertion loss | 0.1 dB |
| Isolation | 80 dB |
| Peak power | 500 kW at 0.1 MPa abs., +25°C |
| Average power | 4 kW |
| Flange interface | MIL-DTL-3922/52C-014 Modified with M6, thread depth min 8 |

ACTUATOR DATA

| | |
|---|--|
| Operating voltage | 28±3 V DC |
| Operating current | 1 A, Self cut off |
| Switching time | 500 ms |
| Duty (min time between successive operations) | 500 ms -20°C to +40°C linearly increasing to 2 s at +70°C |
| Connector | MS 3112E 10-6P |
| Mating connector | MS 3116F 10-6S or eq. |

POSITION INDICATOR

| | |
|-------------------|-------------------------------------|
| Voltage / Current | 30 V Max, 100 mA Max Resistive load |
|-------------------|-------------------------------------|

MECHANICAL DATA

| | |
|--------------|---|
| Material | Aluminium alloy, Cu free |
| Finishing | Chromate per MIL-C-5541 and black painted |
| Air pressure | 0.1 MPa overpr. Max |
| Air leakage | 10 cm ³ /min (0.1 MPa overpr.) Max |
| Weight | 1.5 kg Max |
| Life | 250 000 actuations |

ENVIRONMENTAL DATA

| | |
|---------------------|---|
| Ambient temperature | -20°C to +70°C |
| Vibration | 5 – 18 Hz, 3 mm amplitude 18 – 2000 Hz, 15 g |
| Humidity | 100%RH if dry air in waveguide |