

Hermetic Switch Reed Switches

MICRO-MINIATURE

<i>Parameters</i>			Type	HSR-0025	HSR-0025SM	HSR-003	HSR-004	HSR-023	HSR-067	HSR-069	HSR-080	HSR-370	HSR-502
Configuration				SPST	SPST	SPST	SPST	SPST	SPST	SPST	SPST	SPDT	SPDT
Contact Material ¹				D	D	D	R-D	R	R-D	R-D	R	R-D	R
Figure				A-2	A-0	A-2	A-1	A-1	A-1	A-1	A-2	C-1	C-2
Switching Voltage	Max	Volts DC Volts AC ⁵		30	30	30	30	100	30	30	100 120	30	30
Switching Current	Max	A		0.01	0.01	0.05	0.05	0.25	0.20	0.20	0.25	0.10	0.10
Switching Power	Max	W/VA		0.25	0.25	1	1	3	4	4	10	3	2
Voltage Breakdown ²	Min	Volts DC		80	80	200	350	175	350	300	500	300	175
Initial Contact Resistance	Max	Ohms		0.50	0.50	0.50	0.50	0.15	0.20	0.20	0.10	0.20	0.30
Insulation Resistance ³	Min	Ohms		10 ¹¹	10 ⁹	10 ¹¹	10 ¹¹	10 ¹²	10 ¹¹	10 ¹⁰	10 ¹¹	10 ¹⁰	10 ¹⁰
Operate Sensitivity ⁶	Range	AT		2/15	2/15*	4/20	4/20	5/30	10/35	10/35	15/40	15/35	15/35
Standard Test Coil NARM RS-421-A				I	I	I	I	I	I	I	II	I	I
Operating Time ⁴ Including Bounce	Max	ms		0.30	0.30	0.20	0.20	0.30	0.40	0.50	1	0.90	0.30
Operating Temperature	Range	°C		-40 +125	-40 +125	-40 +125	-40 +125	-40 +125	-40 +125	-40 +125	-40 +125	-40 +125	-40 +125

Dimensions

Overall Length	A	Inch	1.049	0.240	1.050	0.995	1.252	1.240	1.240	1.988	1.485	1.495
Glass Length	B max	Inch	0.170	0.170	0.200	0.245	0.275	0.460	0.515	0.555	0.490	0.315
Glass Diameter	C max	Inch	.037x.050	.037x.050	0.055	0.055	0.070	0.070	0.101	0.125	0.072	0.095
Lead Diameter	D	Inch	0.010	0.010	0.010	0.010	0.015	0.016	0.016	0.023	0.016	0.016
Gap Location	G	Inch	0.550	0.094	0.550	0.500	0.625	0.620	0.620	0.850	0.830	0.650

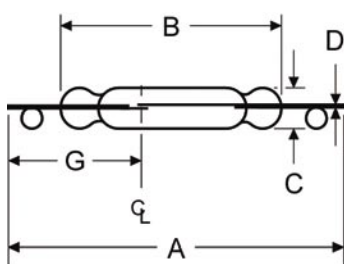


FIGURE A-0

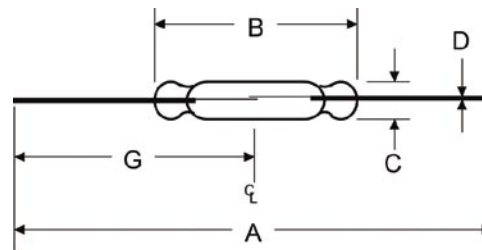


FIGURE A-1

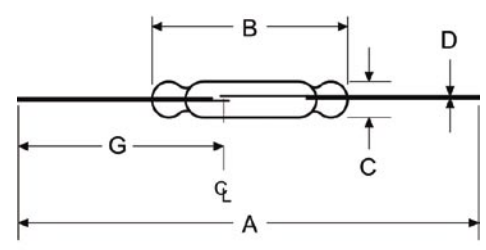


FIGURE A-2