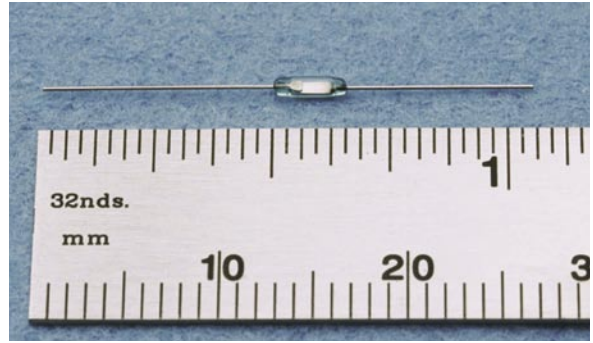


## MINIATURE

HSR-101	HSR-1015	HSR-V100	HSR-301	HSR-302	HSR-510	HSR-520	HSR-522
SPST	SPST	SPST	SPDT	SPDT	SPDT	SPDT	SPDT
R	R	R	R	R	R	R	R
A-1	A-1	A-1	C-1	C-1	C-2	C-2	C-2
200 120	200 120	500 240	120	120	120	120	120
0.50	0.50	1	0.20	0.20	0.25	0.25	0.30
10	10	25	4	4	3	3	8
500	500	1750	200	200	400	400	150
0.10	0.10	0.15	0.15	0.15	0.15	0.15	0.15
10 <sup>10</sup>	10 <sup>11</sup>	10 <sup>11</sup>	10 <sup>10</sup>	10 <sup>10</sup>	10 <sup>9</sup>	10 <sup>9</sup>	10 <sup>10</sup>
10/45	10/45	15/40	15/40	15/40	15/45	15/45	10/50
II	II	II	II	II	II	II	II
0.70	0.70	1.10	1.40	0.80	1.30	1	1.10
-40 +125	-40 +125	-60 +125	-40 +125	-40 +125	-40 +125	-40 +125	-40 +125

2.095	2.190	2.185	1.930	1.930	2.005	2.010	2.145
0.780	0.765	0.800	0.560	0.580	0.575	0.595	0.820
0.091	0.101	0.110	0.093	0.120	0.105	0.125	0.125
0.023	0.023	0.023	0.023	0.023	0.023	0.023	0.023
1.045	1.095	1.095	1.030	1.030	0.910	0.910	0.910



### Lead Configurations

Various lead configurations are available. Contact factory for more information.

### Sensitivity Ranges

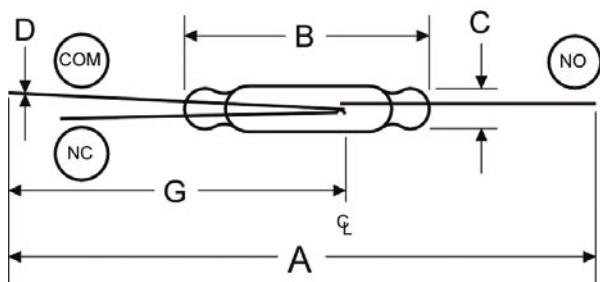
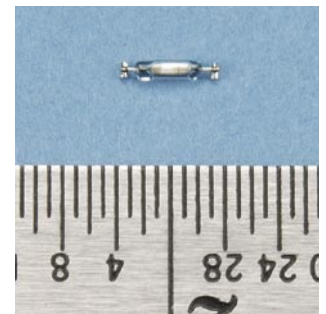
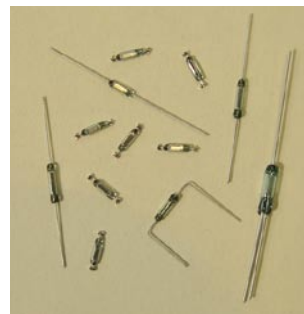
The standard sensitivity ranges are listed in the chart on the left. Smaller ranges within the listed "Standard Range" are also available.

### Applications

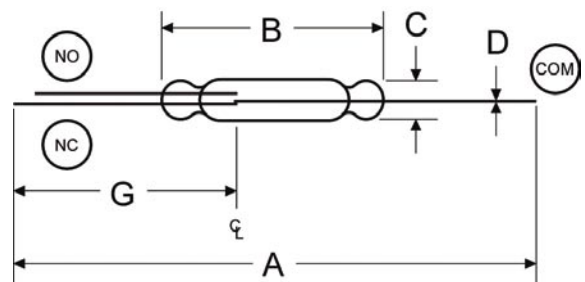
Micro-Miniature and Miniature reed switches are used in thousands of applications across multiple industries. For example, our HSR-0025 is in everything from pacemakers and Vagus nerve stimulators to hearing aids and animal tracking devices. One of our switches is also used on the space shuttle and International Space Station, the HSR-V100.

### Notes

1. R-Rhodium; D-Durel; W-Tungsten; Ru-Ruthenium
  2. Dielectric Strength (voltage breakdown) varies with sensitivity. Consult factory for application information.
  3. Insulation Resistance Test Voltage - 100 VDC
  4. Measured at 60 Hz, 50% Overdrive.
  5. Consult factory for AC Rating
  6. Special Release Sensitivity and/or Differential is available on most models.
- \* Sensitivity before cut and weld



**FIGURE C-1**



**FIGURE C-2**