

# Hermetic Switch Reed Switches

## STANDARD

## HIGH VOLTAGE

Parameters			STANDARD				HIGH VOLTAGE					
			HSR-170	HSR-190	HSR-194	HSR-630	HSR-780	HSR-790	HSR-V7K	HSR-V10K	HSR-V15K	HSR-830
Configuration	Type		SPST	SPST	SPST	SPDT	SPST	SPST	SPST	SPST	SPST	SPDT
Contact Material <sup>1</sup>			R	R	W	R	R	W	W	W	W	R
Figure			A-1	A-1	A-1	C-2	A-1	A-1	A-3	A-3	A-3	C-2
Switching Voltage	Max	Volts DC	200	250	350	150	500	1000	5000	7500	10000	250
		Volts AC <sup>5</sup>	120	240	240	120	240	240	240	240	240	240
Switching Current	Max	A	1.0	1.0	2.0	1.0	1.5	2.5	3.0	3.0	3.0	1.0
Switching Power	Max	W/VA	25	15	50	25	25	50	50	50	50	25
Voltage Breakdown <sup>2</sup>	Min	Volts DC	500	700	600	350	2500	2500	7000	10000	15000	1000
Initial Contact Resistance	Max	Ohms	0.1	0.1	0.1	0.1	0.1	0.1	0.1	0.1	0.1	0.1
Insulation Resistance <sup>3</sup>	Min	Ohms	10 <sup>9</sup>	10 <sup>10</sup>	10 <sup>10</sup>	10 <sup>9</sup>	10 <sup>7</sup>	10 <sup>8</sup>	10 <sup>11</sup>	10 <sup>11</sup>	10 <sup>11</sup>	10 <sup>7</sup>
Operate Sensitivity <sup>8</sup>	Range	AT	40/80	40/80	60/100	40/80	60/100	60/100	60/125	100/150	140/170	50/100
Standard Test Coil NARM RS-421-A			III	IV	IV	IV	IV	IV	III	III	III	IV
Operating Time <sup>4</sup> Including Bounce	Max	ms	2.5	2.5	3.0	2.7	2.5	3.0	5.0	3.2	3.2	3.6
Operating Temperature	Range	°C	-40 +125	-40 +125	-40 +125	-40 +125	0 to +125	0 to +125	-60 +125	-60 +125	-60 +125	-25 +125

## Dimensions

Overall Length	A	Inch	3.420	3.220	3.220	3.390	3.225	3.220	3.215	3.215	3.215	3.385
Glass Length	B max	Inch	1.620	2.010	2.005	1.315	1.940	1.945	2.005	2.005	2.005	1.275
Glass Diameter	C max	Inch	.190	.210	.210	.210	.210	.210	.210	.210	.210	.210
Lead Diameter	D	Inch	.061	.021x.098	.021x.098	.040	.021x.098	.021x.098	.021x.098	.021x.098	.021x.098	.040
Gap Location	G	Inch	1.700	1.615	1.615	1.500	1.600	1.615	1.615	1.615	1.615	1.500

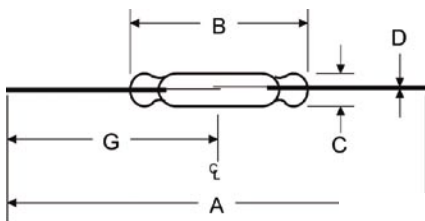


FIGURE A-1

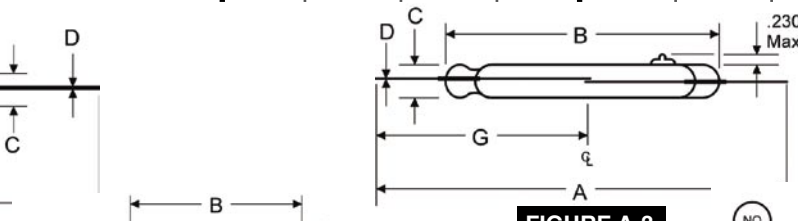


FIGURE A-2

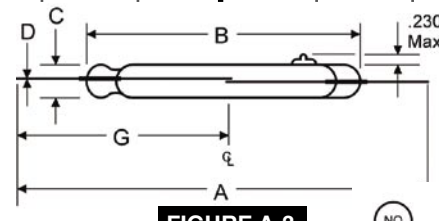


FIGURE A-3

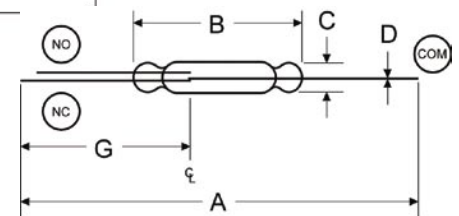


FIGURE C-2