

# 28GHz 2-way Wilkinson Power Divider

**PDW07630**

## DESCRIPTION

DLI's 28GHz 2-way power divider / combiner offers unmatched size and performance in a surface mount configuration. This power divider utilizes DLI's low loss temperature stable materials which offer small size and minimal performance variation over temperature.

## FEATURES

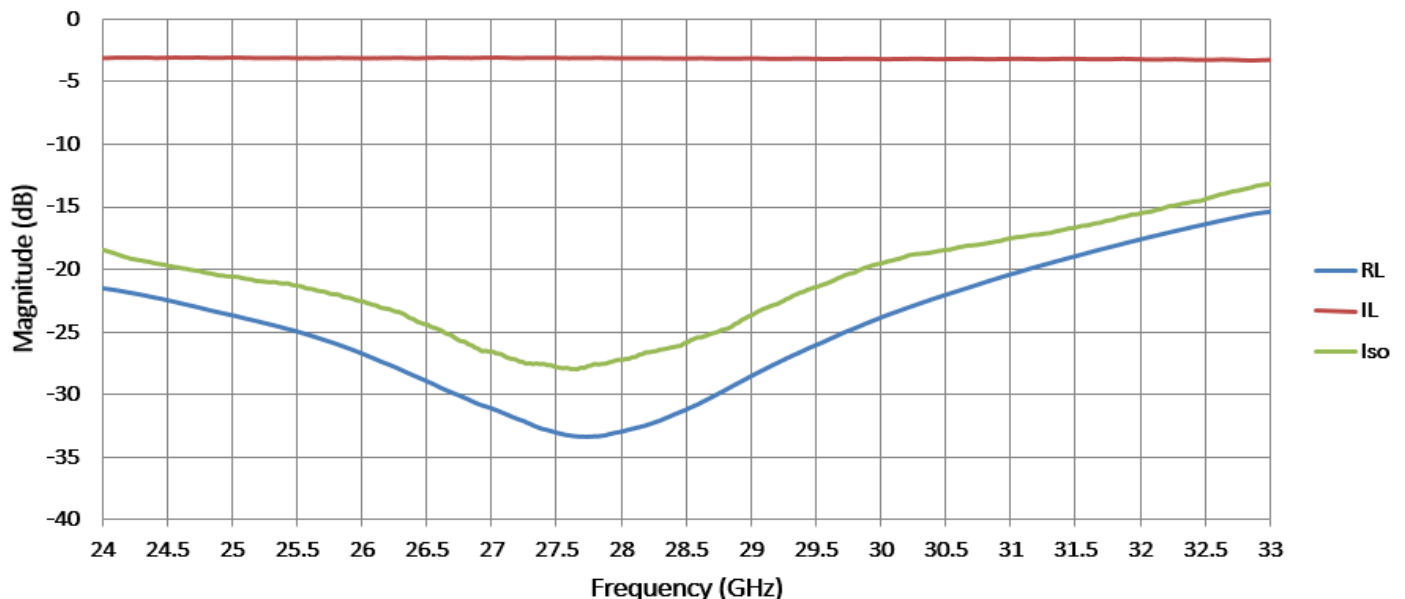
- Small Size
- Solder Surface Mount Package
- Moisture Sensitivity Level: MSL1
- Frequency Stable over Temperature
- Operating & Storage Temp: -55°C to +125°C
- Characteristic Impedance: 50Ω
- Excellent Repeatability

## SPECIFICATIONS\*

Parameter	Frequency (GHz)	Min	Typ.	Max
Nominal Power Splitting (dB) (excess)	24–32		0.25	0.5
Nominal Phase Shift (Deg)			0.0	
Amplitude Balance (dB)				± .25
Phase Balance (Deg)				± 5.0
Excess Insertion Loss (dB)				0.7
Return Loss (dB)		15	20	
Isolation (dB)		14	15	
Input Power				TBD

\*Electrical specifications based on typical mounted performance at room temperature. Insertion loss shall vary ±0.5dB over temperature.

## Typical Measured Performance

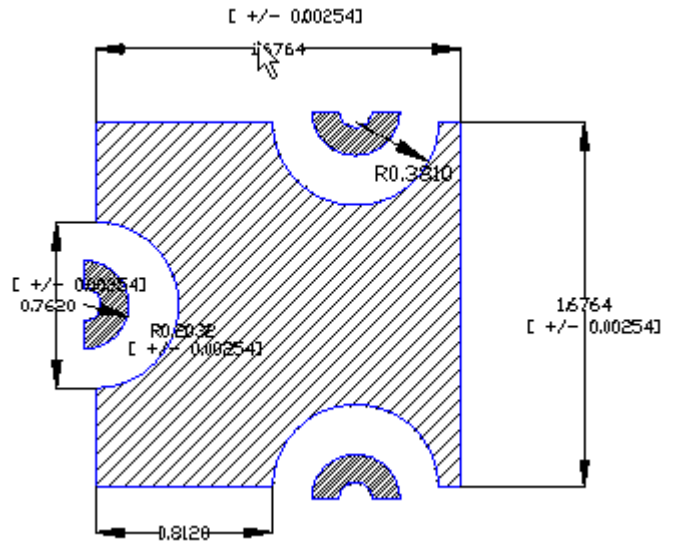
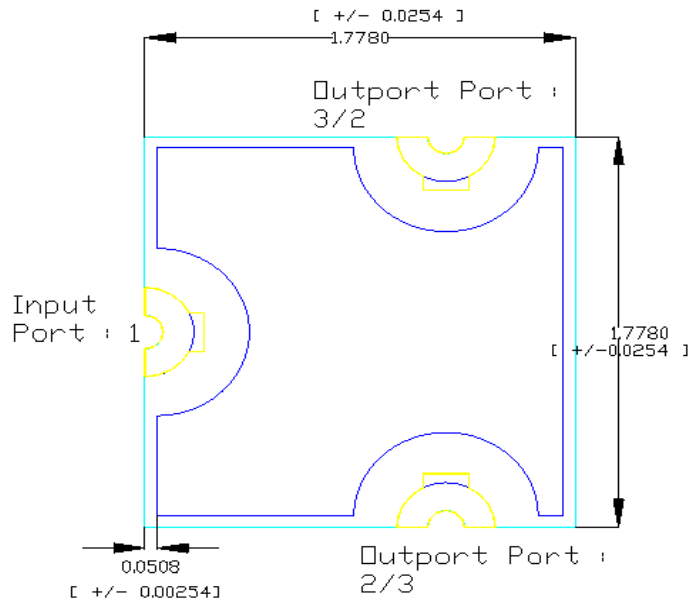


**28GHz 2-way Wilkinson Power Divider**

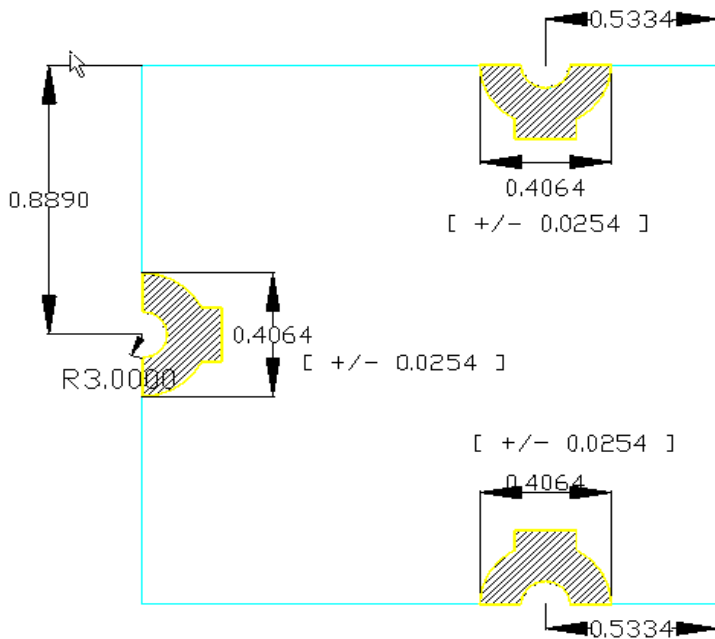
**PDW07630**

**Physical Dimensions**

Units = mm [ +/- tolerance]

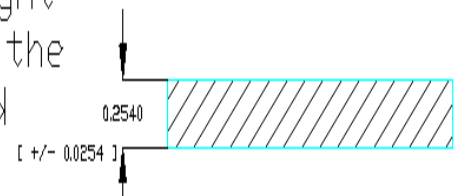


**Bottom View: Grounding Layer**



**Top View: I/O ports**

The Height includes the Top and Bottom metalization



**Side View: Substrate**

